



PACP
PORTUGUESE AMERICAN CITIZENSHIP PROJECT

A NON-PARTISAN INITIATIVE TO PROMOTE CITIZENSHIP AND CIVIC INVOLVEMENT

**IMMIGRANT'S ASSISTANCE CENTER
NEW BEDFORD, MA**

**EVALUATION
OF
THE 2012 ELECTIONS**

**PREPARED
APRIL 8, 2013**

Supported by Luso-American Foundation
Government of the Autonomous Region of the Azores
Business and Community Leaders in the Portuguese American Community

REPORT CONTENTS

Statistics and Summary of Work	2
Results	2
Results Graphs	3
Voter Turnout Summary	3
Voter Turnout by Age	4
Voter Turnout by Age and Gender	4
Voter Turnout by Age and Gender	5
Voter Turnout - November 2012 by Gender and Party	6
Voter Turnout – 2008 vs. 2012 Presidential Elections	7
Appendices	8
Registered Voters by Age and Gender	9
Registered Voters by Age and Party	10
Registered vs. Actual Voters by Age and Gender	
November 2012	11
Registered vs. Actual Voters	12
Actual Voters by Gender and Party – November 2012	13
Voted in both 2008 and 2012 Presidential Elections	14
Voted in all last three elections	14

Key Statistics – 2012

Voter turnout data received from the New Bedford Board of Election Commissioners, February 28, 2013.

Immigrant's Assistance (*City of New Bedford in italics*)

- All Household Members registered to vote: 475 (51,575)
- Voter Turnout - March 2012: 5.1% (8.5%)*
- Voter Turnout - September 2012: 19.6% (14.8%)
- Voter turnout – November 2012: 74.7% (58.8%)

* No reminder postcards were sent out for the March, 2012 election.

Summary of Work

The Immigrant's Assistance Center has been an active participant in the Portuguese American Citizenship Project since 2001.

For the September and November, 2012 elections, postcards were sent out to each parish household where at least one household member was registered to vote. No cards were sent out for the March, 2012 election.

Results

Immigrant's Assistance's voter overall turnout for the September and November 2012 elections was higher than citywide turnout. The Immigrant's Assistance turnout for the September Primary Elections was 19.6%, as compared to the city turnout of 14.8%. The Immigrant's Assistance turnout for the November General Elections was 74.7%, which was significantly higher than the citywide turnout of 58.8%.

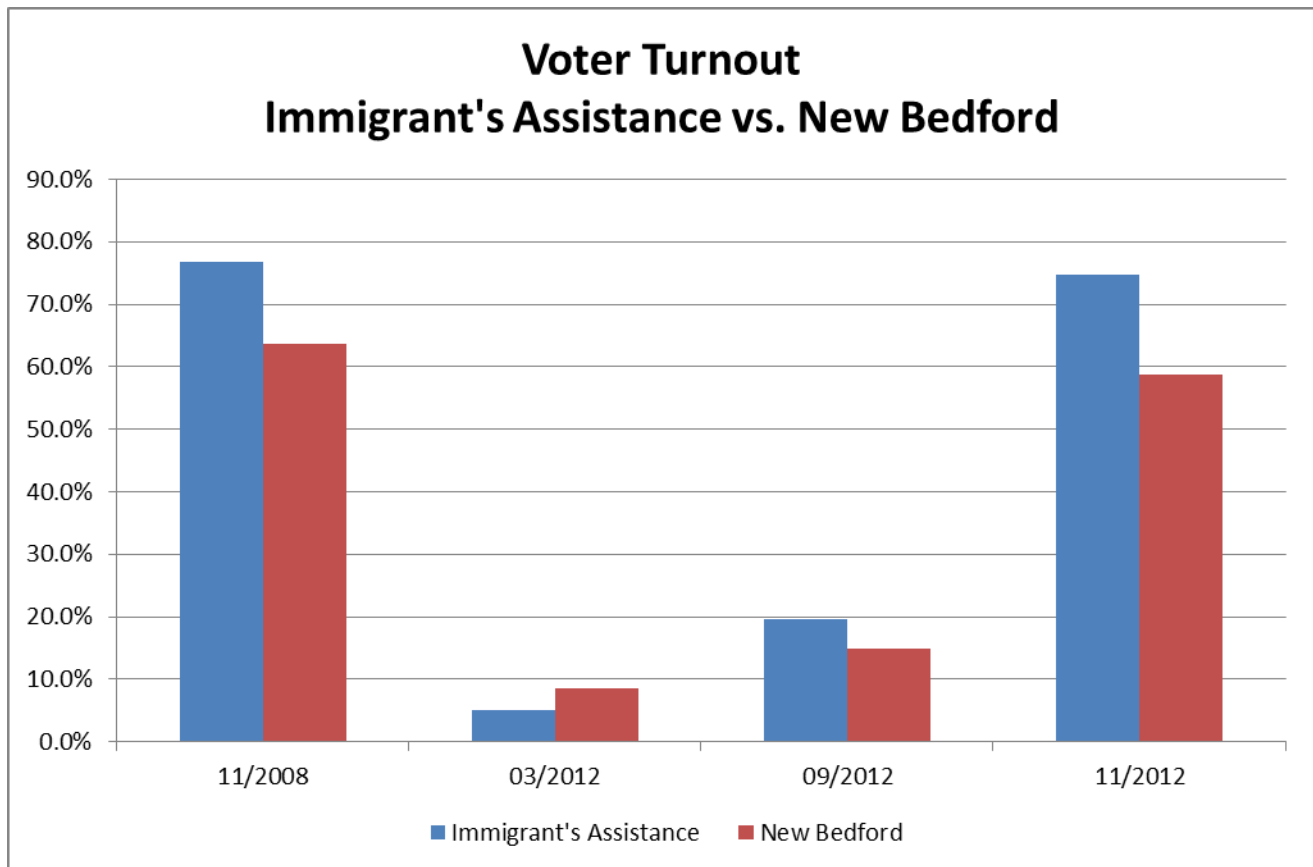
As noted above, no reminder cards were sent out for the March 2012 local election. The Immigrant's Assistance voter turnout in March was 5.1%, which was lower than the citywide turnout of 8.5%.

Voter turnout is not uniform across age groups. Younger voters tended to vote less in March and September, but had a high turnout for the November presidential election. Turnout for Immigrant's Assistance voters was significantly higher than citywide turnout for the November election across all age groups.

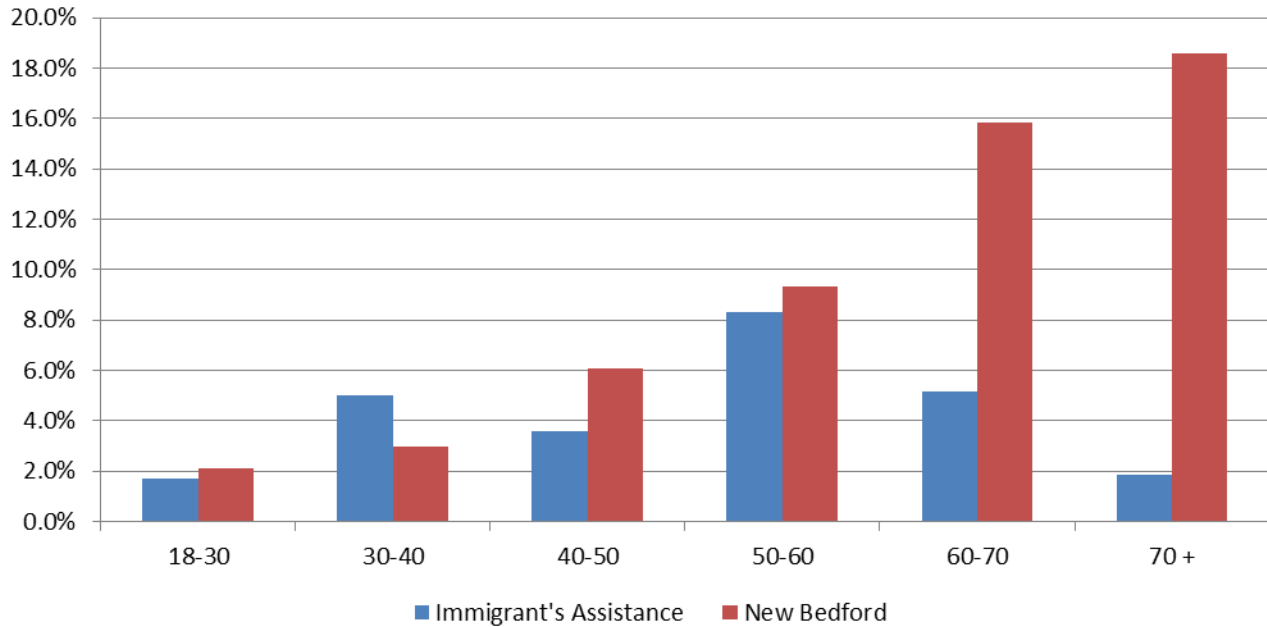
Most registered voters fall between the ages of 50 and 70. There are more women registered to vote in the 18-30, 50-60 and 70+ age groups, while more men are registered to vote in the 30-40, 40-50 and 60-70 age groups. Turnout for women, however was higher in all age groups except with the 70+ group for the November election.

The following graphs summarize voter turnout by age, gender and political party affiliation.

Results Graphs

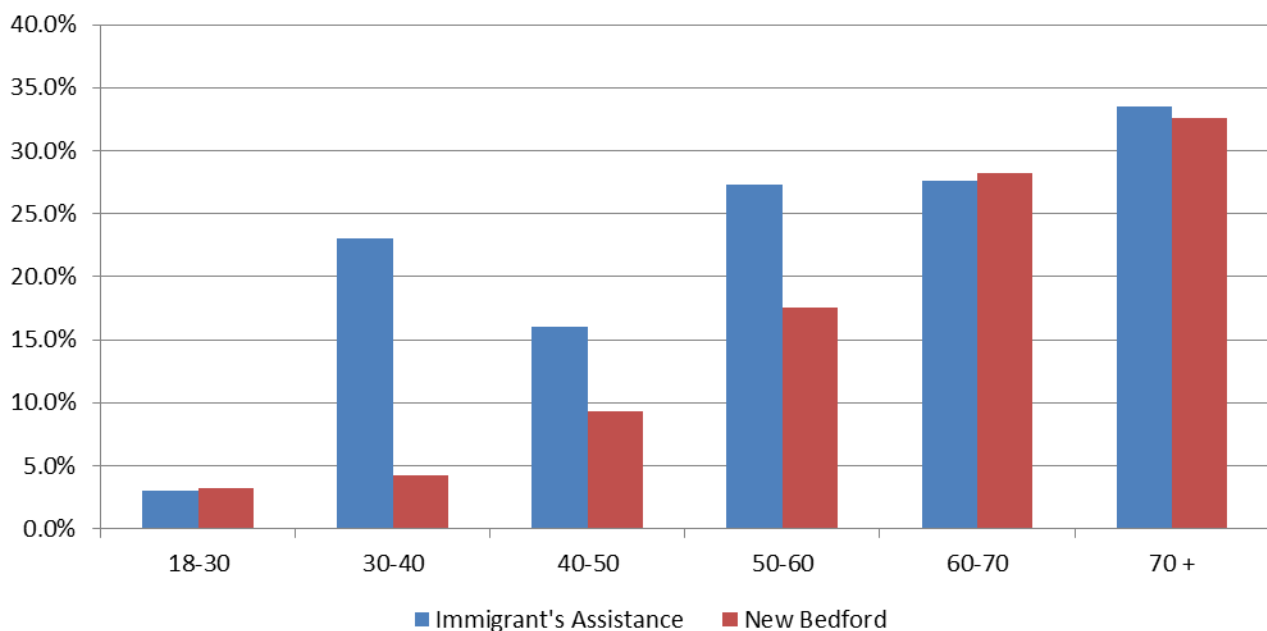


Turnout By Age - March 2012 Immigrant's Assistance vs. New Bedford

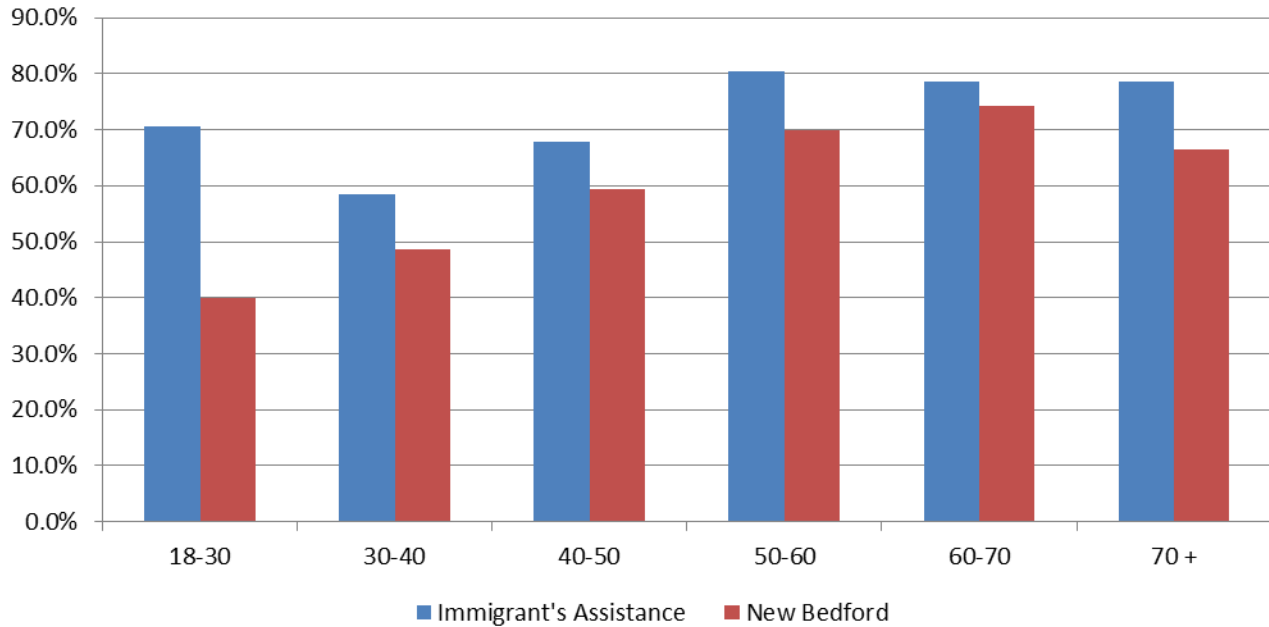


* Reminder postcards were not sent out for the March, 2012 election.

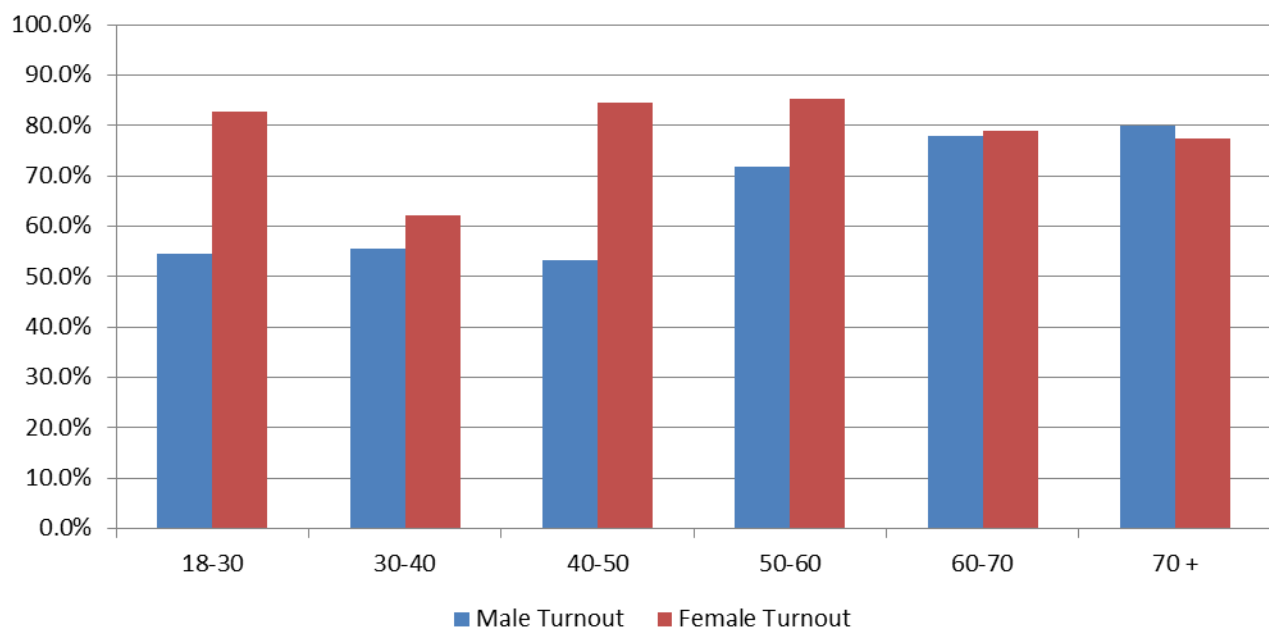
Turnout By Age - September 2012 Immigrant's Assistance vs. New Bedford



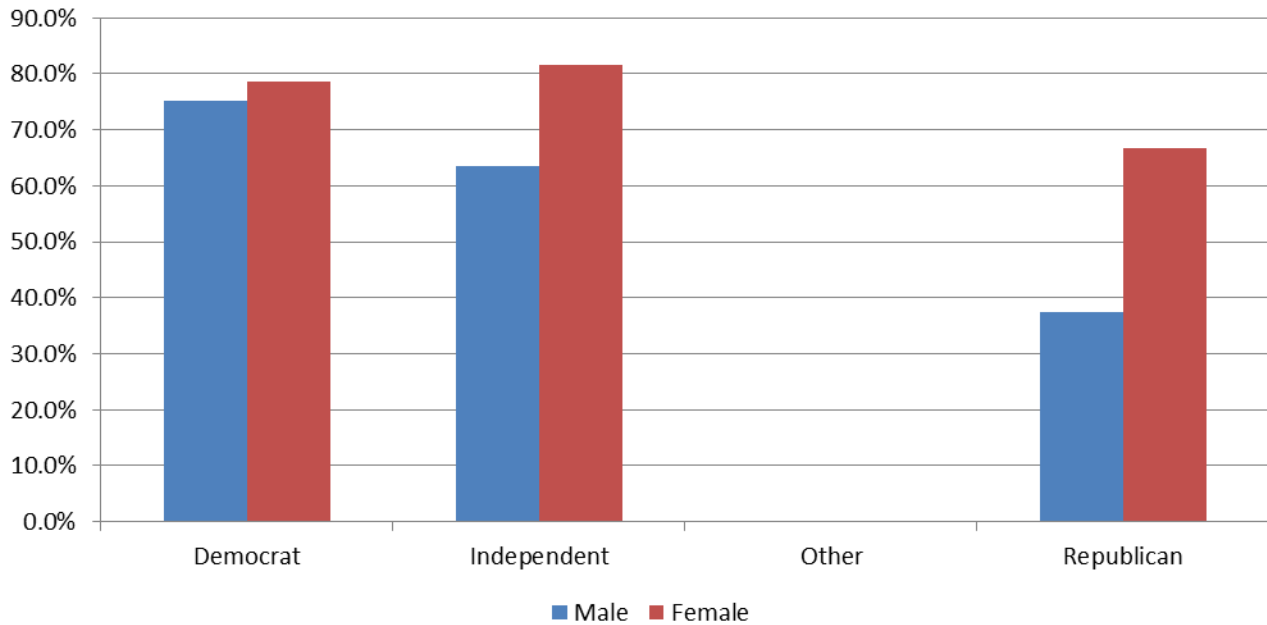
Turnout By Age - November 2012 Immigrant's Assistance vs. New Bedford



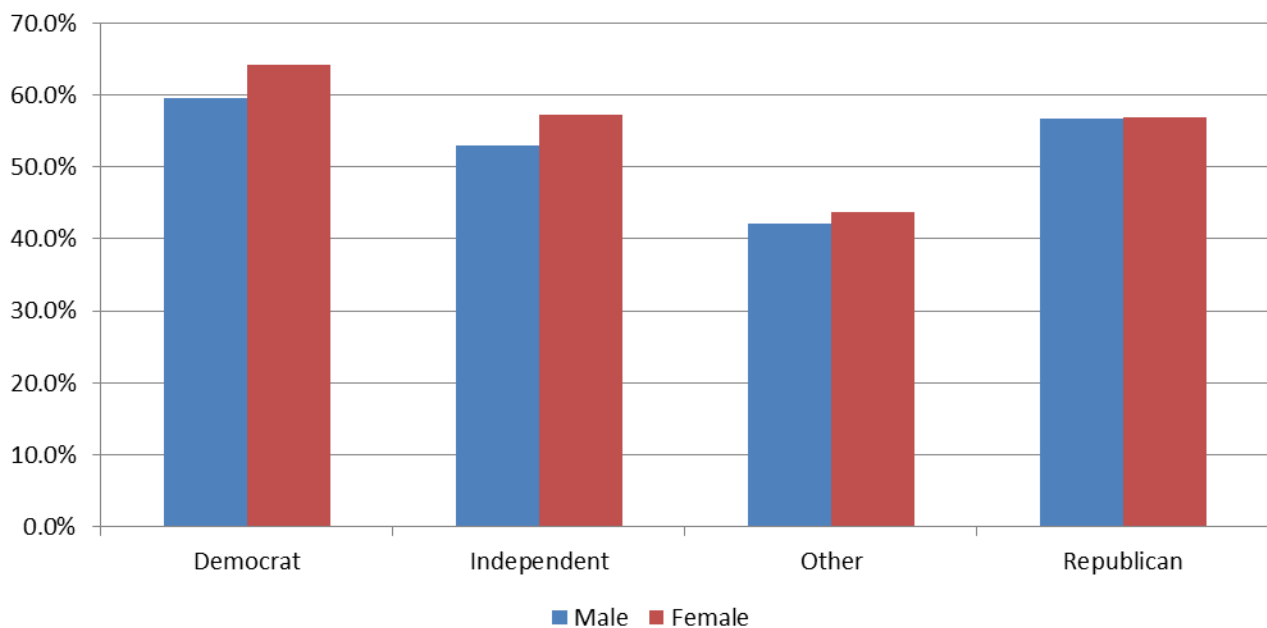
Voter Turnout by Age and Gender November 2012 Immigrant's Assistance



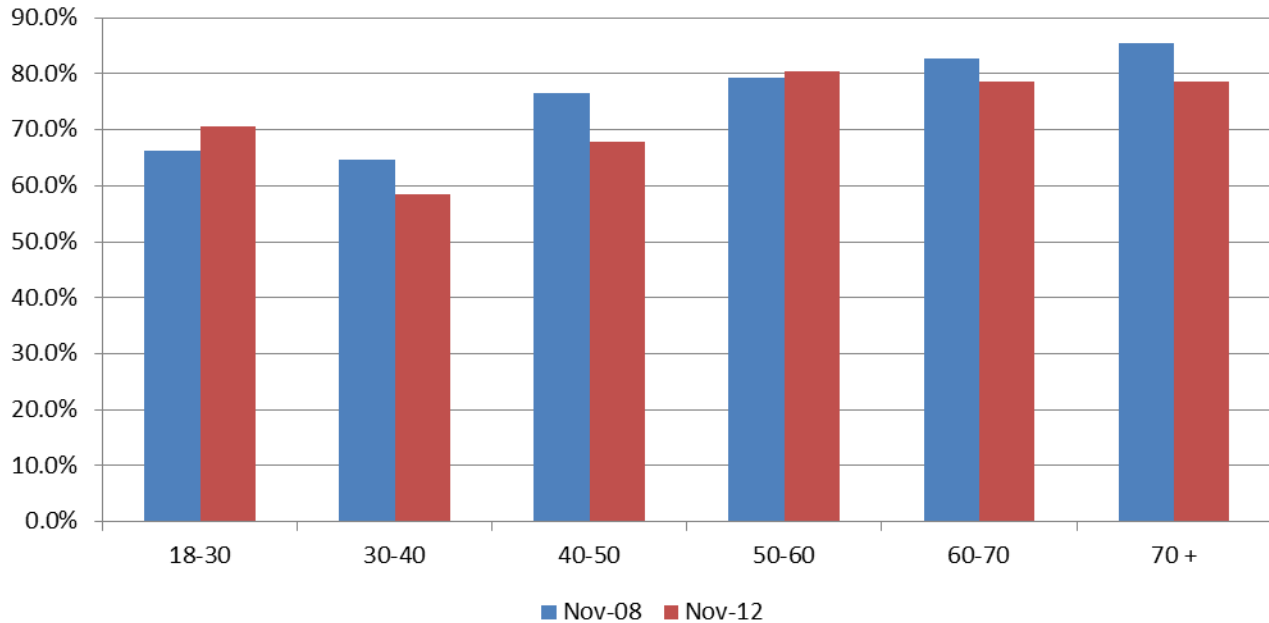
Voter Turnout - November 2012 Election Immigrant's Assistance By Gender and Party



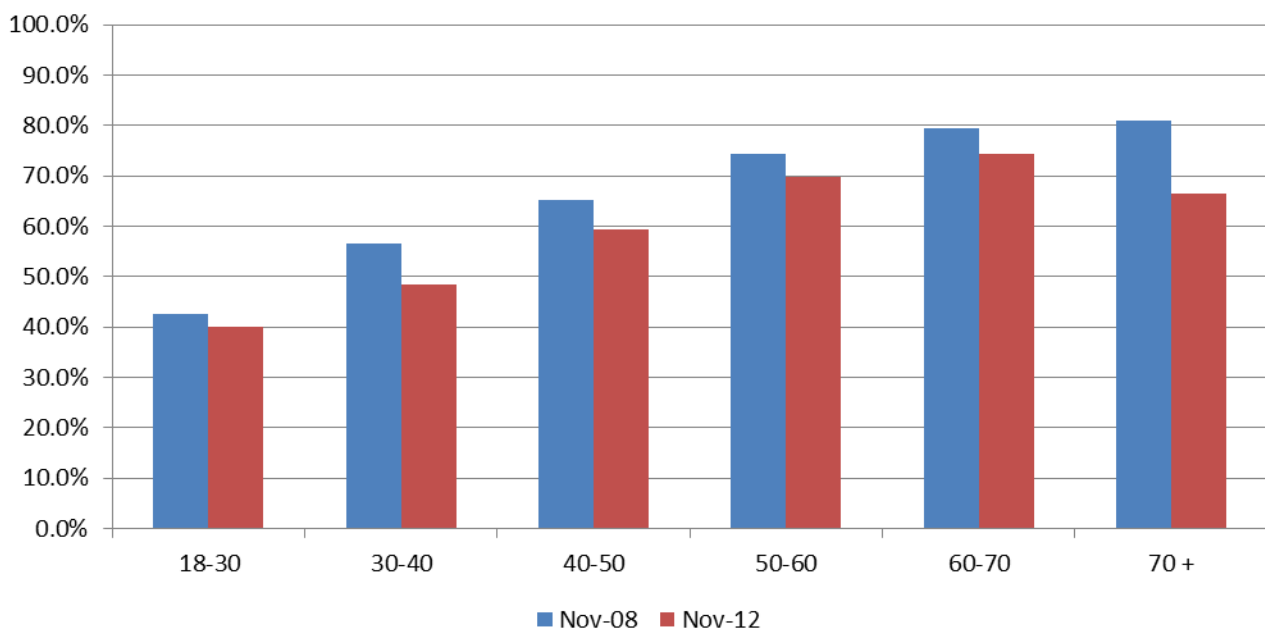
Voter Turnout - November 2012 Election New Bedford By Gender and Party



**Voter Turnout
2008 vs. 2012 Presidential Elections
Immigrant's Assistance by Age**



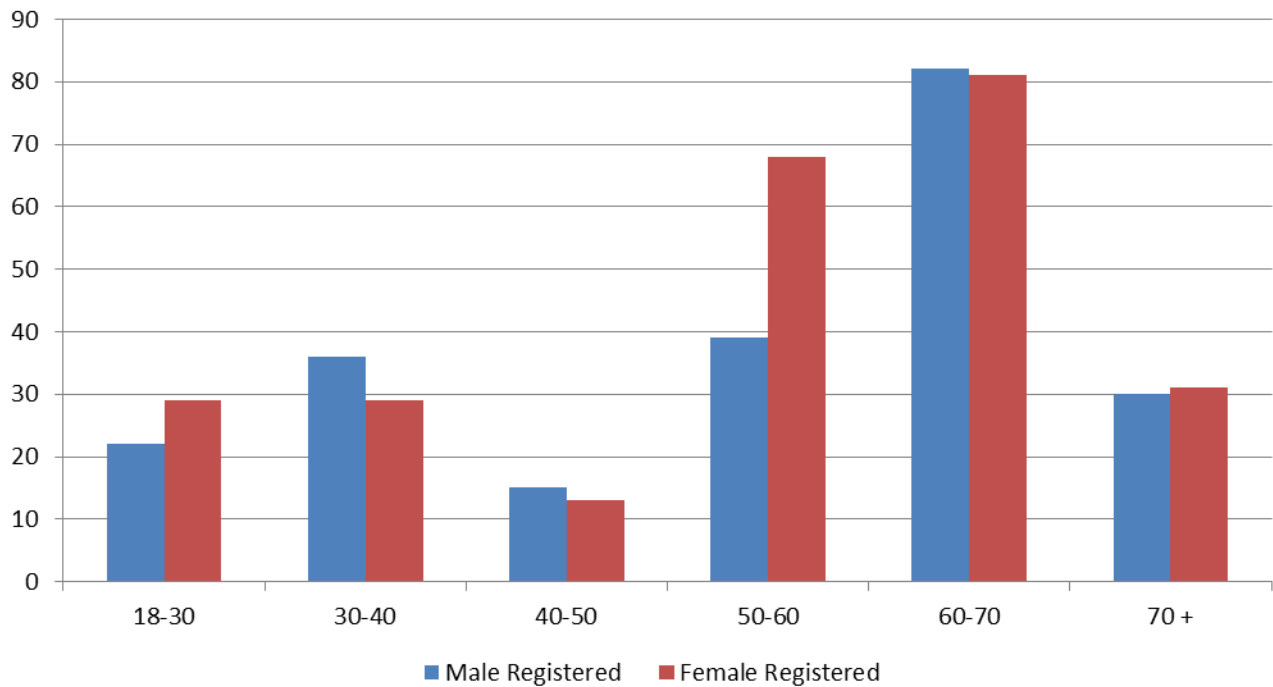
**Voter Turnout
2008 vs. 2012 Presidential Elections
New Bedford by Age**



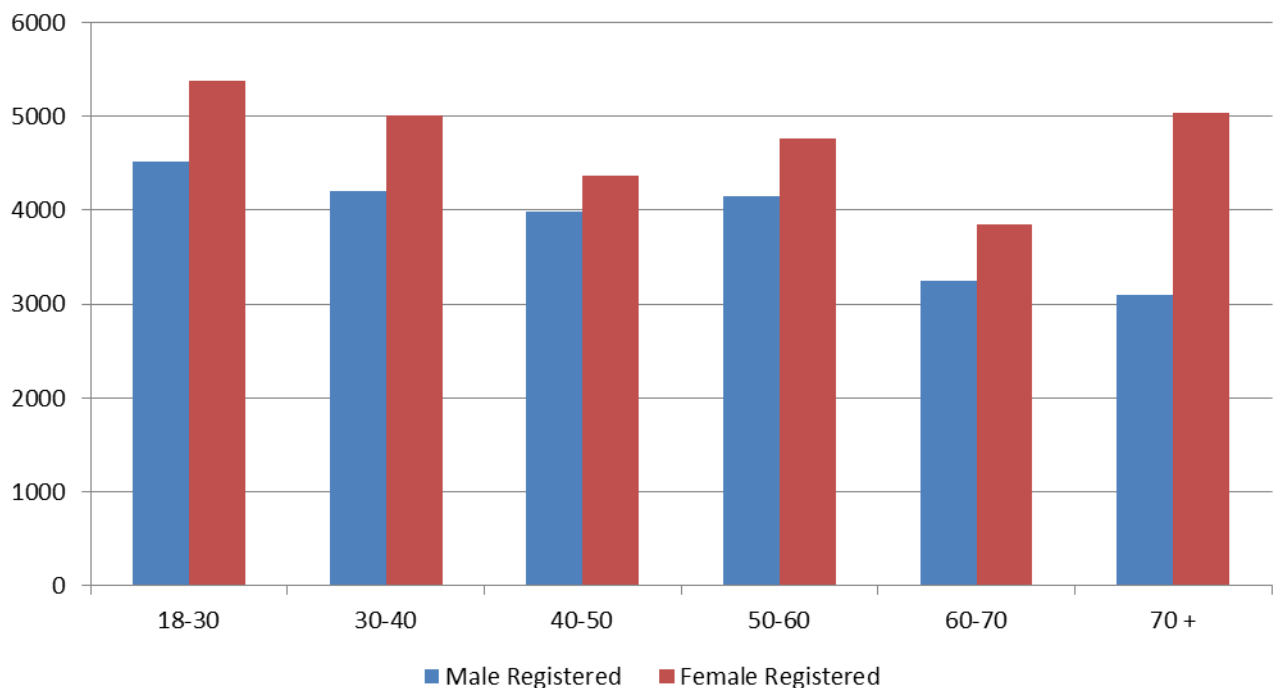
Appendices

Registered Voters by Age and Gender	9
Registered Voters by Age and Party	10
Registered vs. Actual Voters by Age and Gender	
November 2012	11
Registered vs. Actual Voters	12
Actual Voters by Gender and Party – November 2012	13
Voted in both 2008 and 2012 Presidential Elections	14
Voted in all last three elections	14

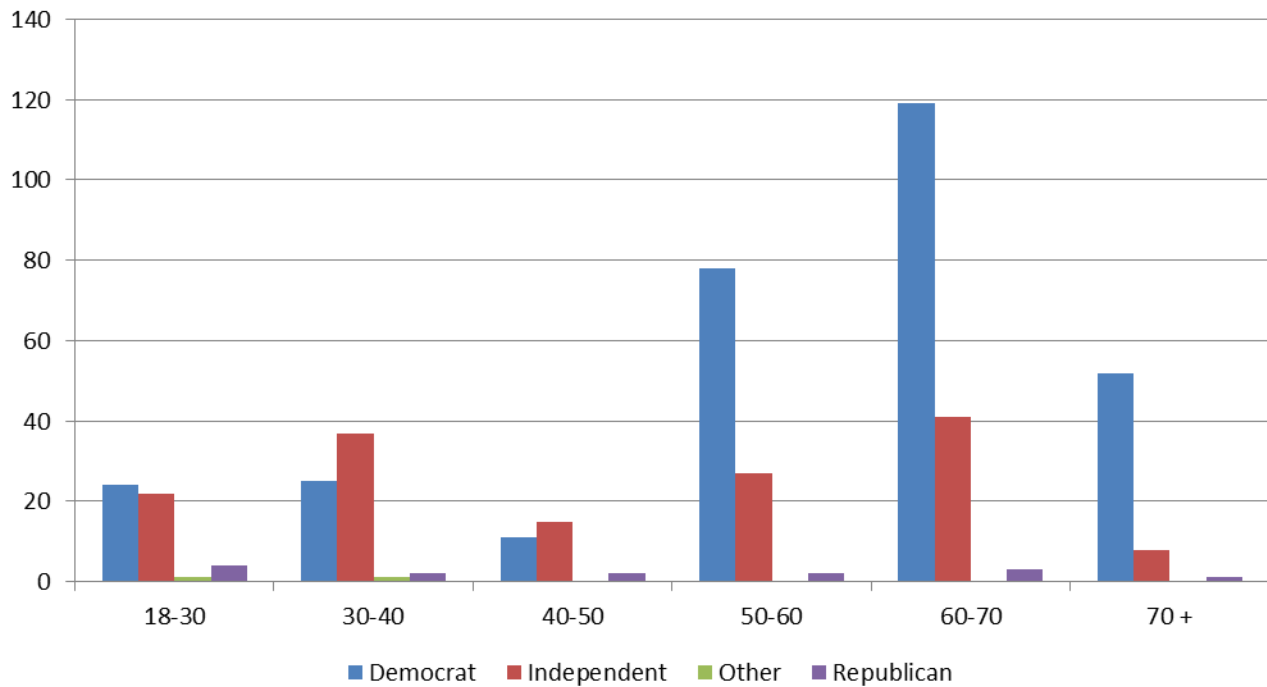
Registered Voters by Age and Gender Immigrant's Assistance



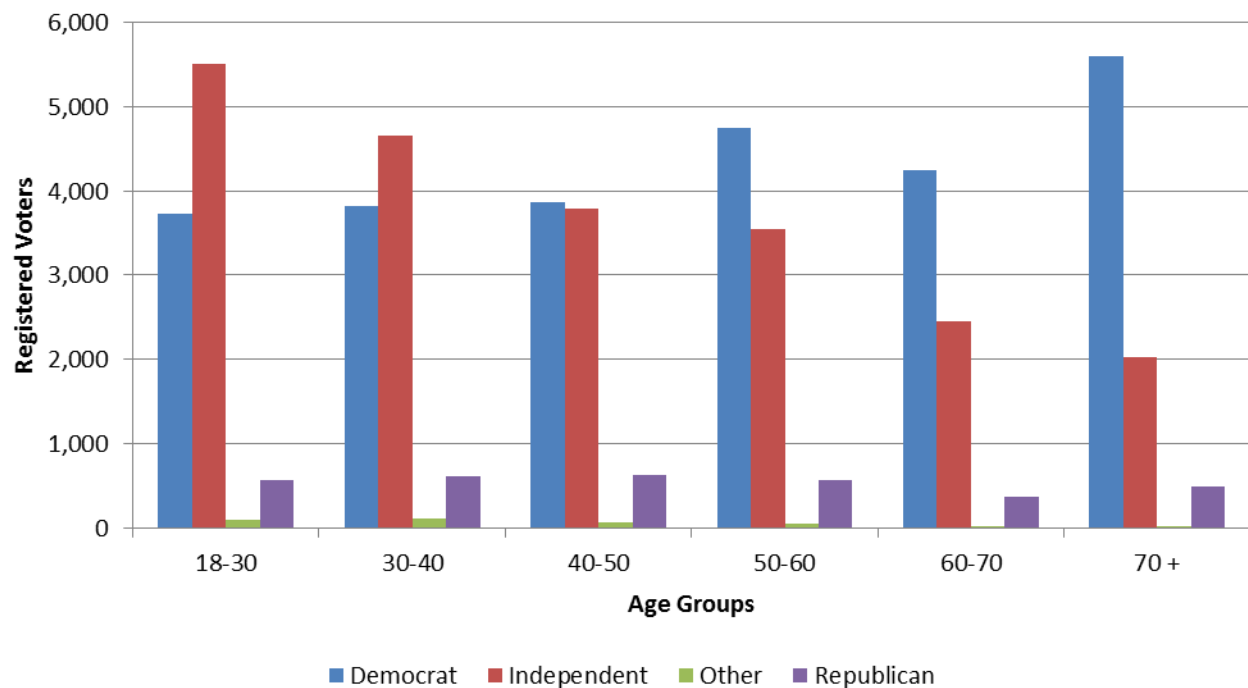
Registered Voters by Age and Gender New Bedford



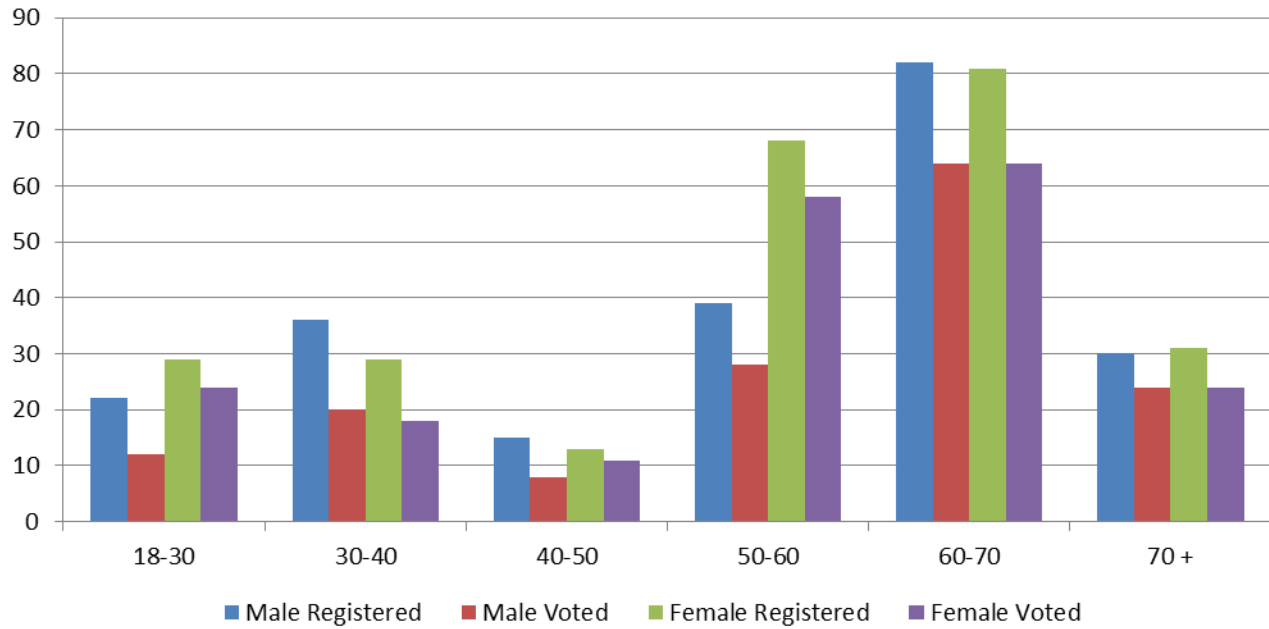
Registered to Vote by Age and Party Immigrant's Assistance - November 2012



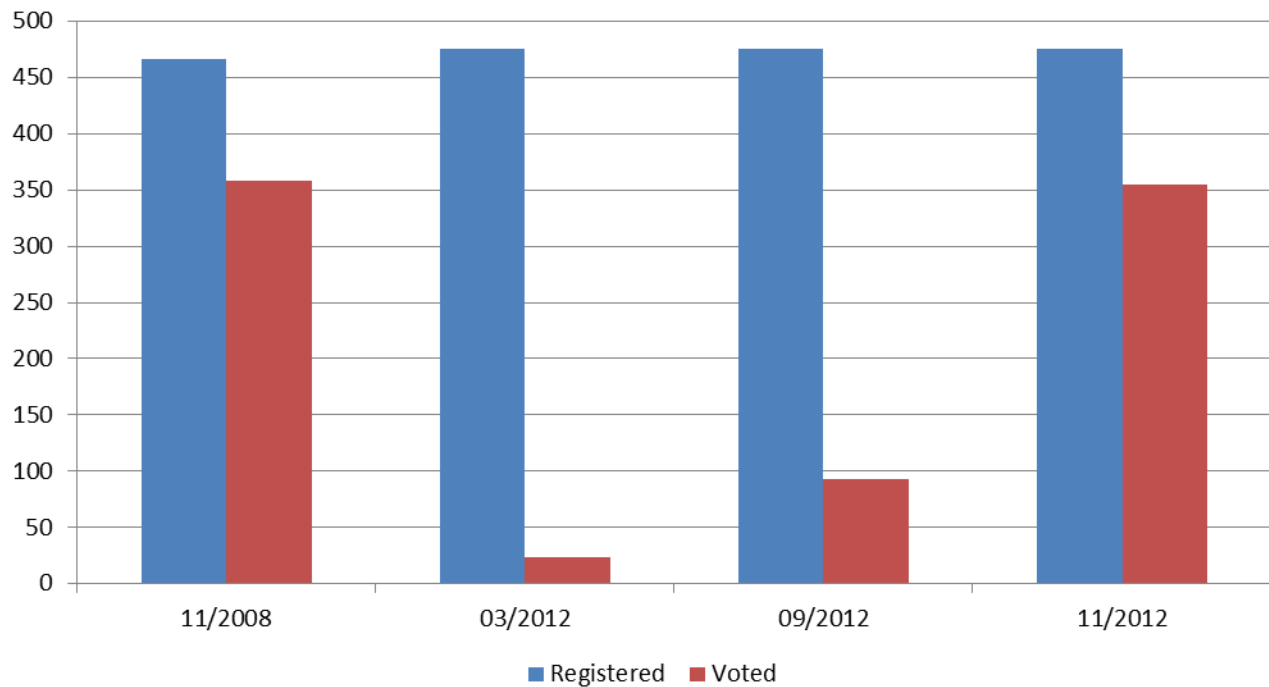
Registered Voters by Age and Party New Bedford



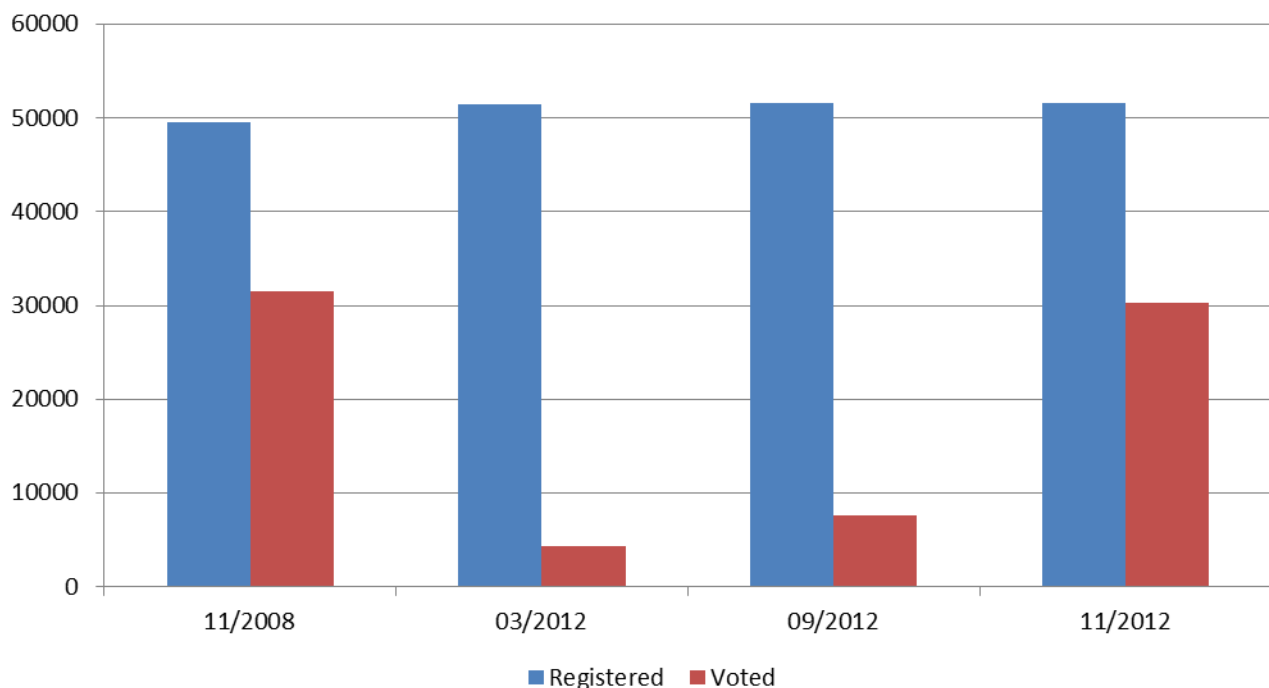
Voter Turnout - November 2012 Immigrant's Assistance By Age and Gender



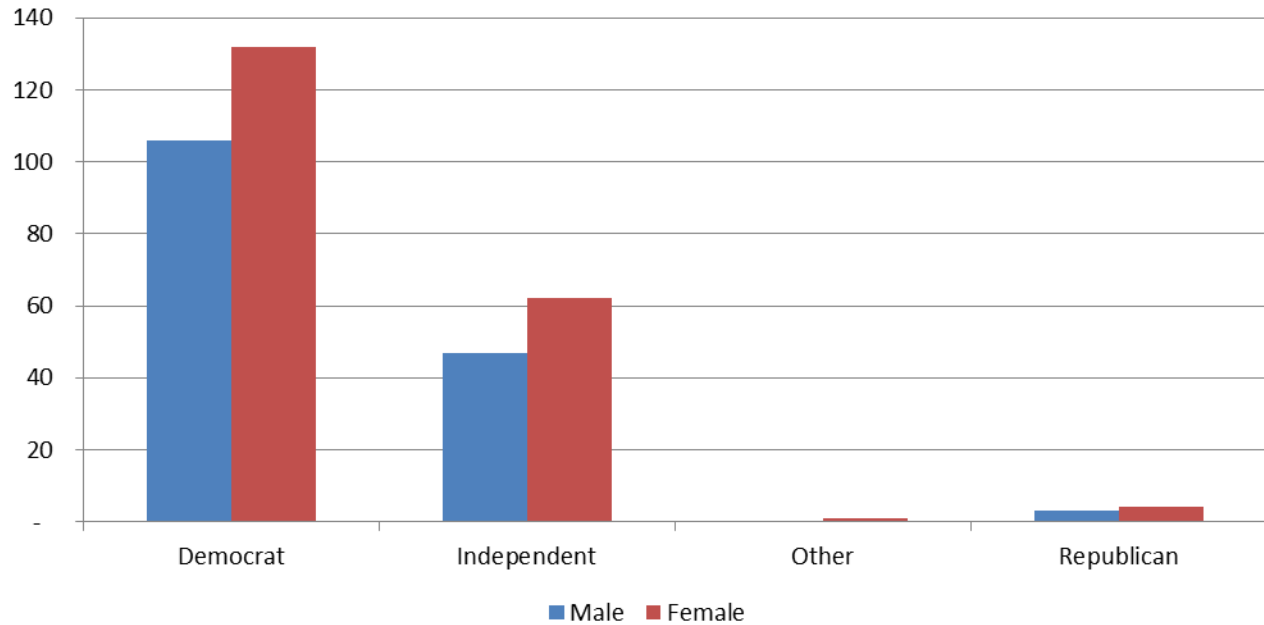
Registered Voters vs. Actual Voters Immigrant's Assistance



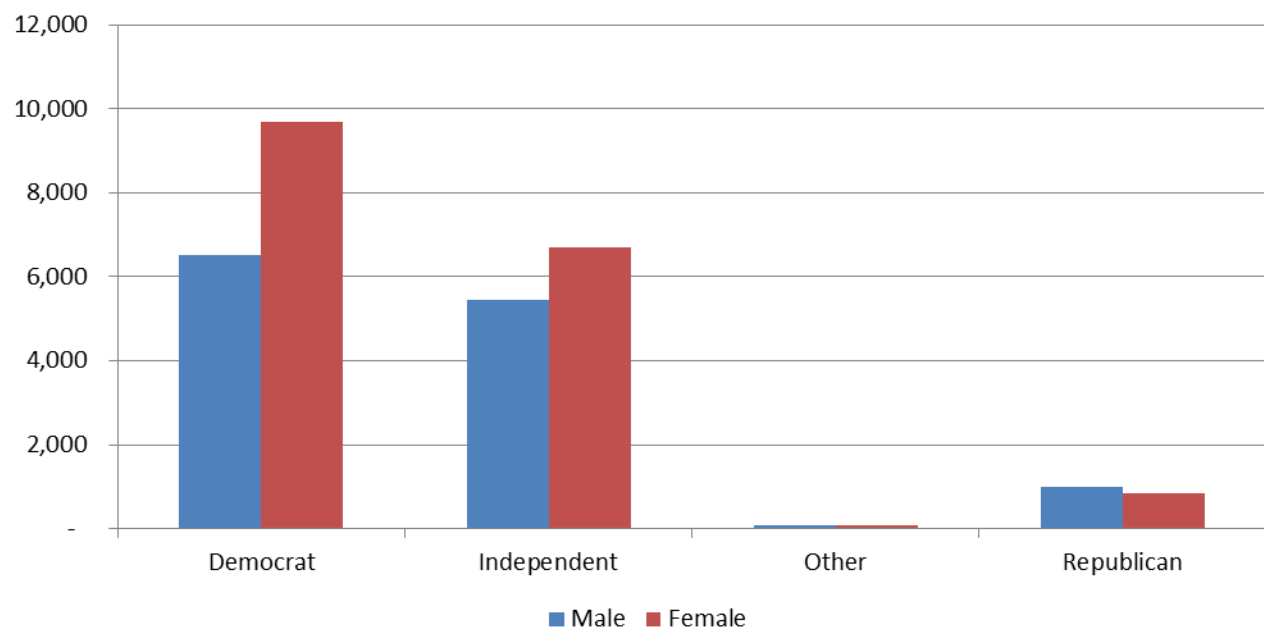
Registered Voters vs. Actual Voters New Bedford



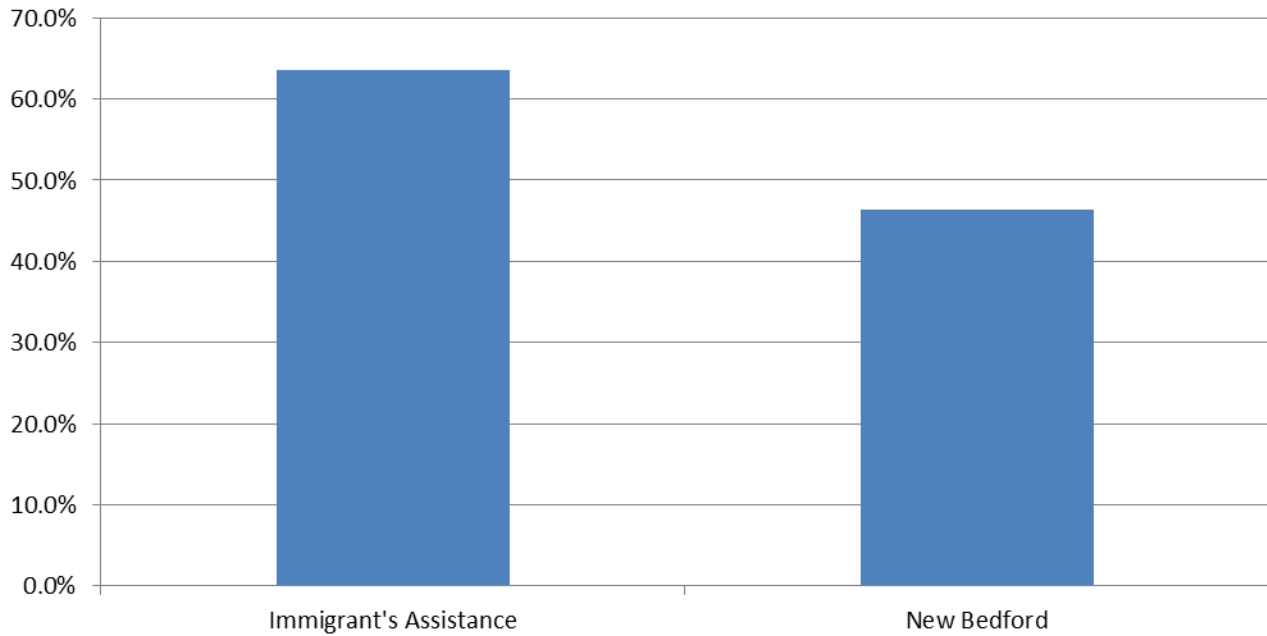
**Voted in November 2012 Election
Immigrant's Assistance
Actual Voters By Gender and Party**



**Voted in November 2012 Election
New Bedford
Actual Voters By Gender and Party**



Voter Turnout
Voted in Both 2008 and 2012 Presidential Elections
Immigrant's Assistance vs. New Bedford



Voter Turnout
Voted in Last 3 Elections
Immigrant's Assistance vs. New Bedford

